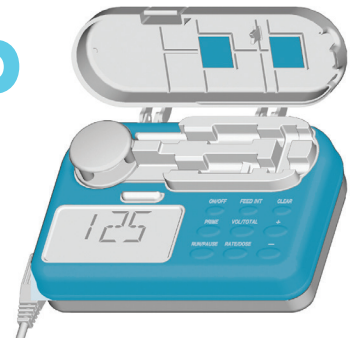


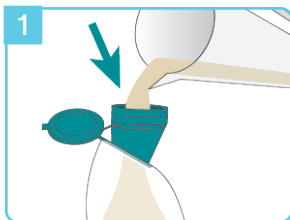
Infinity Feeding Pump

POUR & PRIME

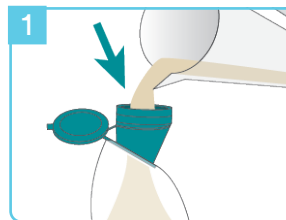


If Priming Manually

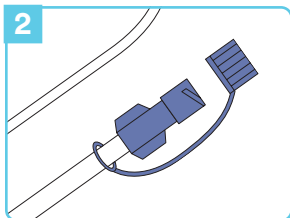
If Priming via Pump



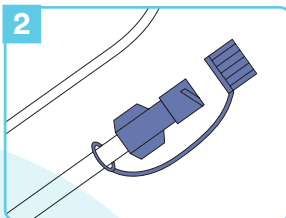
1 Hold the bag's funnel upright and pour in feeding formula. Close cap tightly.



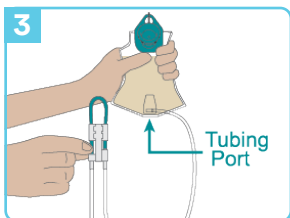
1 Hold the bag's funnel upright and pour in feeding formula. Close cap tightly.



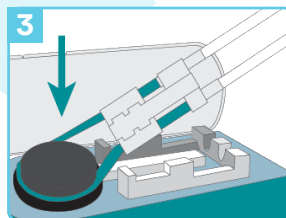
2 Remove protective cover from the feeding tube connector.



2 Remove protective cover from the feeding tube connector.

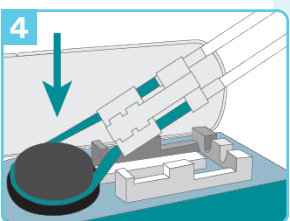


3 Prime the set manually by pinching teal colored tubing below the "D" symbol. While pinching, squeeze the bag at the same time until formula reaches the feeding tube connector.



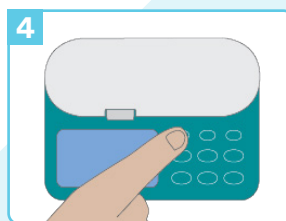
3 Loop the silicone tubing around the pump wheel stretching lightly.

Place cassette into the pump and close the door.



4 Loop the silicone tubing around the pump wheel stretching lightly.

Place cassette into the pump and close the door.



4 Turn pump on by pressing and holding the **ON/OFF** key until the pump beeps.

Then, press and hold the **PRIME** key until formula reaches the feeding tube connector (approximately 90 seconds).